



Unraveling the Urban Landscape: Assessing the Influence of Informal Settlements on Spatial Planning in Lusaka, Zambia

Emmanuel Nzazi

Zhejiang A&F University, Hangzhou, China
Email: lenzazi15@gmail.com

How to cite this paper: Nzazi, E. (2025) Unraveling the Urban Landscape: Assessing the Influence of Informal Settlements on Spatial Planning in Lusaka, Zambia. *Open Access Library Journal*, 12: e12879. <https://doi.org/10.4236/oalib.1112879>

Received: December 27, 2024

Accepted: February 10, 2025

Published: February 13, 2025

Copyright © 2025 by author(s) and Open Access Library Inc.

This work is licensed under the Creative Commons Attribution International License (CC BY 4.0).

<http://creativecommons.org/licenses/by/4.0/>



Open Access

Abstract

This research delves into the intricate interplay between informal settlements and conventional urban planning in the swiftly urbanizing landscape of Lusaka, Zambia. With urbanization gaining momentum globally, the role and significance of informal settlements in shaping urban environments have become increasingly evident. Lusaka, being the capital and largest city of Zambia, offers a pertinent context for examining the multifaceted relationships between informal settlements and established urban planning strategies. The study employs a comprehensive methodology, integrating spatial analysis, ethnographic fieldwork, and interviews with key stakeholders. Leveraging Geographic Information Systems (GIS) and remote sensing methodologies, we scrutinize the spatial dispersion, density, and physical characteristics of informal settlements within the city. Concurrently, ethnographic fieldwork provides a qualitative lens to comprehend the socio-economic, cultural, and political dynamics of these settlements, as well as the daily experiences of their residents. Crucial insights reveal a dynamic and mutually beneficial rapport between informal settlements and formal urban planning frameworks in Lusaka. Informal settlements frequently emerge in response to structural inadequacies in the existing urban landscape, including housing scarcities, limited access to essential services, and economic exclusion. Simultaneously, they function as pivotal economic centers and reservoirs of cultural diversity, contributing to the vitality and resilience of the city. Community-Led Infrastructure Development: In Kanyama, residents have initiated drainage improvement projects in collaboration with NGOs and local authorities. These grassroots efforts have not only mitigated flooding but also influenced the city's approach to integrating local knowledge into infrastructure planning. Economic Contributions: Informal settlements such as Chibolya have become hubs for informal trade, contributing significantly to Lusaka's economy. Recognizing this, city planners have

incorporated markets and trading spaces into urban plans, fostering economic inclusion. Innovative Housing Solutions: The George compound's regularization program showcased how informal housing layouts can inspire flexible zoning policies. Planners adapted these layouts to optimize land use while preserving community networks. Participatory Approaches in Policy Design: Lessons from Misisi settlement's community-driven waste management initiatives informed the city's solid waste management strategy. These participatory models have been scaled to other parts of Lusaka, demonstrating the value of integrating informal practices into formal policies. Data-Driven Urban Planning: GIS mapping of informal settlements, spearheaded by the Zambia Homeless and Poor People's Federation, has provided critical data for Lusaka's planning authorities. This data has enhanced resource allocation and service delivery strategies across the city. The study also uncovers the hurdles and prospects entailed in integrating informal settlements into formal planning processes. While informal settlements constitute an indispensable facet of Lusaka's urban fabric, their unregulated expansion raises concerns about land tenure, ecological sustainability, and public health. Moreover, their assimilation into broader planning endeavors necessitates a nuanced comprehension of community needs and aspirations. The paper culminates in a series of policy recommendations designed to cultivate a more inclusive, sustainable, and just urban milieu in Lusaka. These proposals underscore the significance of acknowledging informal settlements as integral components of the urban fabric and advocate for participatory planning processes that engage local communities in decision-making. Additionally, the study emphasizes the imperative of targeted interventions to enhance infrastructure, housing standards, and accessibility to essential services within informal settlements. By illuminating the intricate dynamics between informal settlements and established urban planning, this research enriches our understanding of urban development patterns in Lusaka, while offering invaluable insights for urban planners, policymakers, and researchers confronting similar challenges in swiftly urbanizing settings worldwide.

Subject Areas

Urban Planning

Keywords

Urban Landscape, Informal Settlements

1. Introduction

Urbanization is an ongoing global phenomenon, with developing countries experiencing rapid urban growth and the associated challenges of informal settlements. In Lusaka, the capital of Zambia, the expansion of informal settlements has become a prominent feature of the urban landscape. These settlements pose significant implications for spatial planning, necessitating a comprehensive assessment

of their influence on the city's physical and social fabric. This research paper aims to unravel the intricate relationship between informal settlements and spatial planning in Lusaka, exploring their influence on urban development processes and outcomes.

The process of urbanization in developing countries has been characterized by population growth, rural-urban migration, and inadequate infrastructure provision. As a result, informal settlements have emerged as a coping mechanism for the urban poor, providing shelter and opportunities for livelihood. According to UN-Habitat, around 55% of the world's population resided in urban areas in 2018, with a substantial portion living in informal settlements [1]. These settlements, commonly referred to as slums, shantytowns, or squatter settlements, are characterized by their unplanned nature, lack of tenure security, and limited access to basic services [2].

Lusaka, the largest city in Zambia, has experienced rapid urbanization in recent decades. The city's population has more than tripled since 1990, with projections indicating further growth in the coming years [3]. This population expansion, combined with the limited availability of affordable formal housing, has contributed to the proliferation of informal settlements in Lusaka. The Zambia Land Alliance estimates that approximately 70% of Lusaka's population resides in informal settlements, enduring inadequate housing conditions and limited access to basic services such as water, sanitation, and healthcare [4].

Informal settlements, often referred to as peri-urban areas in Lusaka, house a substantial portion of the city's population. Nearly 70% of Lusaka's residents live in such areas. Settlements like Kanyama, Chibolya, and Misisi have become hubs of economic and social activity despite their marginalization in formal planning frameworks. The main drivers of these informal settlements include poverty, lack of affordable housing, and insufficient urban planning to accommodate the city's burgeoning population.

Spatial planning is a critical component of urban governance and plays a pivotal role in shaping the physical, social, and economic dimensions of cities. It encompasses the allocation of land for various uses, the provision of infrastructure and services, and the promotion of sustainable development [5]. Effective spatial planning ensures the equitable distribution of resources, enhances urban functionality and promotes the well-being of urban residents. However, informal settlements challenge traditional planning approaches due to their unplanned nature, rapid growth, and complex land tenure arrangements.

Understanding the influence of informal settlements on spatial planning is essential for policymakers, urban planners, and researchers. Several studies have highlighted the impact of informal settlements on spatial patterns, infrastructure provision, and socio-economic dynamics in various urban contexts [6]-[8].

However, limited research has specifically focused on Lusaka, Zambia. This study aims to fill this research gap by conducting a comprehensive assessment of the influence of informal settlements on spatial planning in Lusaka.

This research paper seeks to achieve the following objectives:

- 1) Analyze the spatial dynamics and patterns of informal settlements in Lusaka.
- 2) Examine the socio-economic factors driving the growth and persistence of informal settlements.
- 3) Assess the impacts of informal settlements on spatial planning outcomes in Lusaka.

To achieve these objectives, a mixed-methods research approach will be employed. Primary data will be collected through surveys and site visits to informal settlements in Lusaka. Secondary data will be sourced from relevant literature, reports, and official documents. The data will be analyzed using qualitative and quantitative techniques to provide a comprehensive understanding of the influence of informal settlements on spatial planning in Lusaka.

This research paper aims to contribute to the existing body of knowledge on the relationship between informal settlements and spatial planning. By specifically focusing on Lusaka, Zambia, it provides valuable insights into the unique context of informal settlements in a rapidly urbanizing African city. The findings of this study can inform evidence-based decision-making processes and guide policymakers and urban planners in addressing the challenges posed by informal settlements. Ultimately, the research aims to promote inclusive and sustainable spatial planning practices that enhance the quality of life for all residents of Lusaka and contribute to the overall development of the city. The literature reviewed to this effect aims to explore the existing body of knowledge regarding informal settlements' influence on spatial planning in Lusaka, highlighting key factors, challenges, and potential solutions.

1.1. Theoretical Framework: Concepts of Urbanization, Informal Settlements and Spatial Planning

Theoretical concepts of urbanization, informal settlements, and spatial planning serve as the foundation for understanding the complex relationship in the context of Lusaka, Zambia. Urbanization is a global phenomenon characterized by rapid city growth and population concentration [9]. Informal settlements, also known as slums or shantytowns, are integral to urbanization in developing countries and represent unplanned and marginalized areas where vulnerable populations reside [10].

Spatial planning plays a crucial role in guiding urban development, land use, and infrastructure provision [11]. Informal settlements challenge traditional planning approaches due to their unplanned nature, lack of formal land tenure, and inadequate access to basic services. Understanding these theoretical concepts is essential for comprehending the influence of informal settlements on spatial planning in Lusaka.

1.2. Overview of Previous Studies on Informal Settlements and Spatial Planning in Lusaka

Previous research on informal settlements and spatial planning in Lusaka has

highlighted the challenges posed by rapid urbanization. Studies by Chileshe and Thole (2018) and [12] have shown a significant expansion of informal settlements and their impact on the urban fabric. They underscored the need for comprehensive spatial planning strategies to address socio-economic disparities and infrastructural deficiencies in these settlements. However, research specifically focusing on the direct influence of informal settlements on spatial planning in Lusaka is limited, warranting further investigation to inform policy interventions.

1.3. Examination of Relevant Urban Development Policies and Regulations in Zambia

To address the influence of informal settlements on spatial planning in Lusaka, it is essential to analyze relevant urban development policies and regulations in Zambia. The Zambian government has implemented various policies and programs to address urban informality and improve living conditions in informal settlements [4]. Examining these policies, including the National Urban Policy and the Urban and Regional Planning Act, will provide a critical understanding of the existing institutional framework and its effectiveness in responding to informal settlements' challenges in Lusaka.

By reviewing theoretical concepts, analyzing previous studies, conducting a comparative analysis, and examining relevant policies and regulations, this literature review lays the groundwork for assessing the influence of informal settlements on spatial planning in Lusaka. The comprehensive understanding of these interrelated aspects will contribute to evidence-based policy recommendations and inform urban planning strategies for creating inclusive and sustainable urban environments in Lusaka, Zambia.

1.3.1. Policy and Regulatory Framework for Informal Settlements

The legal framework for addressing informal settlements in Lusaka significantly impacts spatial planning outcomes. [13] Argue that existing policies should be reevaluated to integrate informal settlements into the urban fabric rather than perpetuating segregation. In this context, innovative solutions such as participatory upgrading strategies are recommended.

1.3.2. Best Practices from International Experiences

Learning from successful experiences in other cities can inform Lusaka's spatial planning efforts. A comparative analysis by [14] highlights various international case studies where inclusive spatial planning approaches have led to the successful integration of informal settlements, offering valuable lessons for policymakers in Lusaka.

The literature reviewed provides broad information on the general influences of informal settlements and even gives case studies on some cities where similar research has been conducted. However, while the existing materials and publications are rich in information, there is a lack of in-depth detail on the influences of informal settlements in the case of Lusaka, Zambia. An investigation into the local

area plans for the city of Lusaka from the Lusaka City Council and the Lusaka Provincial Planning Authority revealed that the local area plans had been changed multiple times from their original design due to the changes on the ground caused by the expansion of informal settlements. Spatial planning focuses on organizing and regulating land use and resources within a specific area to achieve particular social, economic, and environmental objectives. It entails the design of land use and development patterns with the goal of creating functional, aesthetically pleasing, and sustainable environments. However, this goal is hindered by the springing up of informal settlements, which by nature are barely functional, disorganized, and not aesthetically pleasing. In the case of Lusaka, informal settlements are typically intertwined within the fabric of the city and tend to grow alone in planned areas. These two parallel yet related phenomena occurring within the same space cause a number of effects on the planning of space, land use, and natural resources. This is why this study is significantly important; it aims to highlight some of the effects of the existence of informal settlements on spatial planning, which will provide a road map on how to then come up with solutions to these problems.

2. Source Data and Research Methods

2.1. Source Data

The source of data for this research paper will be collected through surveys, interviews, and various credible literature, reports, official documents, and spatial planning records. This includes academic publications, government reports, urban development plans, and data from relevant organizations such as the United Nations and the Zambia Land Alliance. The data will provide a broader contextual framework for understanding the historical, social, economic, and political dimensions of informal settlements in Lusaka. Furthermore, it will offer comprehensive background information on spatial planning policies, governance structures, and previous studies related to informal settlements in the city.

2.2. Research Methodology

By utilizing a qualitative research approach and employing multiple data collection methods, this research aims to provide a comprehensive understanding of the influence of informal settlements on spatial planning in Lusaka, Zambia. The findings will offer valuable insights for policymakers, urban planners, and community-based organizations to develop inclusive and sustainable spatial planning strategies for the city's urban growth and development.

2.3. Research Design

To gain a comprehensive understanding of how informal settlements influence spatial planning in Lusaka, a qualitative research approach (QRA) is employed. This design allows for in-depth exploration, interpretation, and analysis of complex factors and interactions within the urban landscape. Qualitative methods are

well-suited for capturing the perspectives, experiences, and behaviors of stakeholders involved in spatial planning and living in informal settlements.

Data Collection Methods: Interviews, Surveys, Site Visits, and Document Analysis

1) Interviews: Semi-structured interviews were conducted with key stakeholders, including urban planners, local authorities, and representatives from community-based organizations. These interviews elicited valuable insights into spatial planning processes, challenges, and residents' perspectives on their living conditions and aspirations.

2) Surveys: Structured questionnaires were administered to a representative sample of informal settlement residents to gather quantitative data on socio-economic characteristics, access to basic services, and perceptions of the spatial planning initiatives in Lusaka.

3) Site Visits: Comprehensive site visits were conducted to observe and document the physical characteristics of informal settlements, including their spatial layout, infrastructure, and living conditions. Site visits were an aid in identifying specific spatial planning challenges and opportunities in each settlement.

4) Document Analysis: Relevant policy documents, spatial plans, and urban development reports were analyzed to understand the existing regulatory framework, planning policies, and strategies related to informal settlements in Lusaka.

2.4. Selection of Study Areas and Justification

The study areas were selected based on the presence of significant informal settlements and their varied spatial planning contexts in Lusaka. The selection included settlements with different levels of integration into the formal urban fabric, varying degrees of service provision, and distinctive policy interventions. Representative areas will ensure that findings are applicable to a broader range of informal settlements in the city.

2.5. Sampling Techniques and Target Respondents

Key Stakeholders: Purposive sampling was employed to identify and select key stakeholders involved in spatial planning, including urban planners, Local Authorities, Government Ministries, and community leaders. The aim is to include a cross-section of individuals who can provide valuable insights into planning processes and the challenges posed by informal settlements.

3. Characteristics and Distribution of Informal Settlements in Zambia

1) Mapping and Categorization of Informal Settlements in the City

Precise mapping and systematic categorization of informal settlements in Lusaka form the foundation for understanding their spatial extent and diversity. Leveraging advanced technologies, including remote sensing and Geographic Information Systems (GIS), this chapter aims to provide a comprehensive depiction of

the presence and patterns of informal settlements within Lusaka's urban fabric. **Figure 1** shows the general distribution of informal and formal settlements in the city of Lusaka. [15]

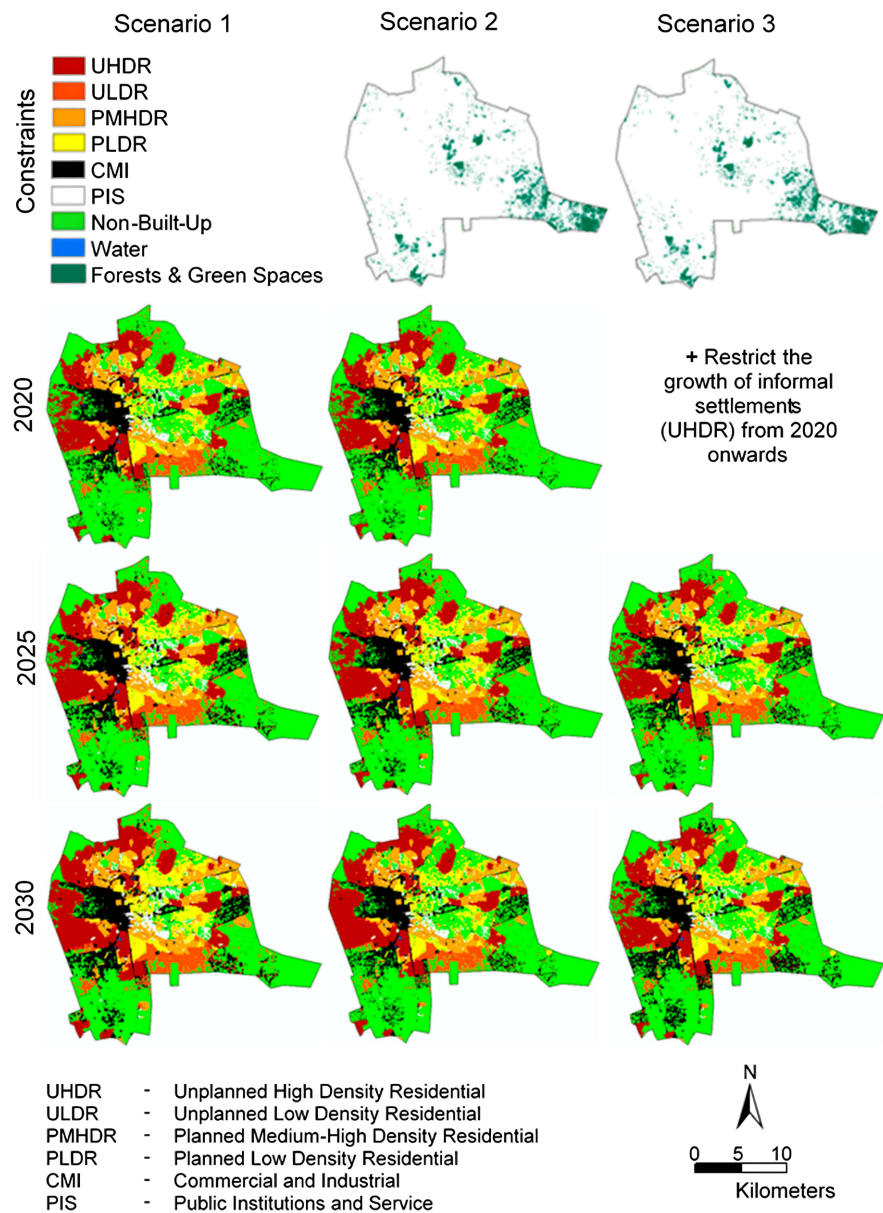


Figure 1. Distribution of informal and formal settlements in Lusaka.

Satellite imagery, supplemented by GIS tools, enables the accurate delineation of informal settlement boundaries, facilitating clear differentiation from formal urban areas [16]. This spatial delineation serves as the basis for assessing the density and distribution of informal settlements across various geographic regions in Lusaka. Moreover, the classification of settlements based on parameters such as size, formalization status, and proximity to urban centers contributes to a nuanced understanding of their characteristics and potential implications for spatial planning [17].

Using GIS tools, projections of informal settlement expansions can be simulated, using trends and patterns. A study from [18] simulated the projected expansion of informal settlements in Lusaka over a period of Thirty (30) years. The image below depicts the three scenarios. (See **Figure 2**)

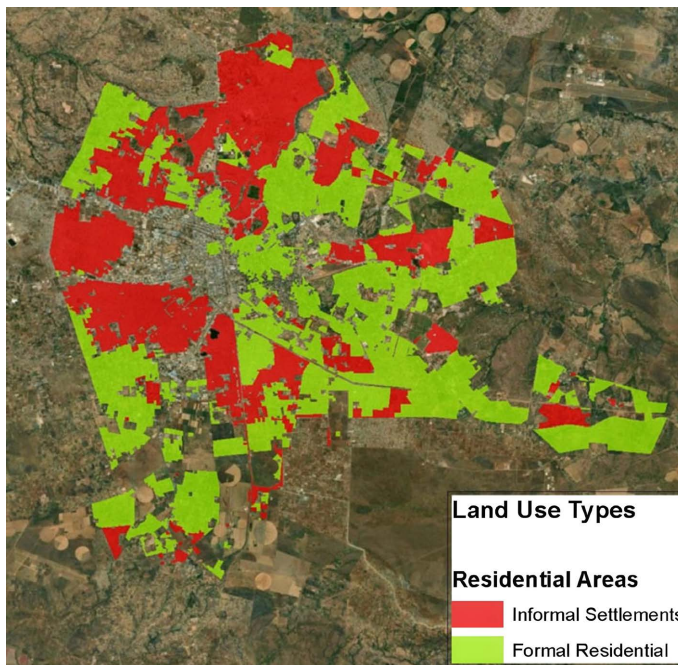


Figure 2. The projected expansion of informal settlements in Lusaka over thirty years [18].

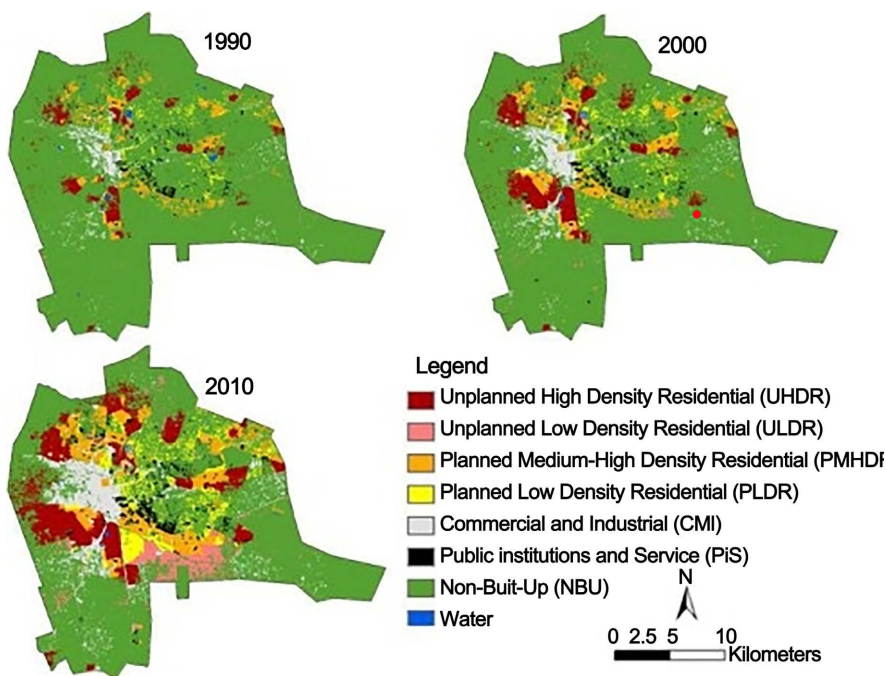


Figure 3. The sprawl of informal settlements between 1990 and 2010 [19].

The city of Lusaka expanded quite rapidly between 2000 and 2020, and both the

population and the built-up area doubled in size. According to [15], the total area where informal settlements in Lusaka are located grew from 4391 hectares in 2000 to 9430 hectares in 2020—nearly doubling the total area covered by informal settlements. [15] Further, it states that the population living in those settlements nearly tripled from 553,000 in 2000 to 1,407,000 in 2020. The density in those settlements increased from 126 persons per hectare to 148 persons per hectare—an increase of 17.5% within two decades. The sprawl of informal settlements can be further seen in a study by [19], which shows how informal settlements and built-up areas grew between 1990 and 2010. The image below, mapped using GIS, clearly indicates the changes and spread of informal settlements in Lusaka. (See **Figure 3**)

2) Socio-Economic and Demographic Profile of Informal Settlement Residents

A comprehensive grasp of the socio-economic and demographic dimensions of informal settlement residents is pivotal to comprehending their impact on spatial planning. Through rigorous data collection methods, including household surveys and interviews, this chapter aims to capture key indicators reflecting the socio-economic conditions and demographic composition of these communities.

In-depth household surveys will collect data on variables such as household income, education levels, employment statuses, family structures, and access to essential services. Subsequent analysis of this data will provide nuanced insights into the living conditions, challenges, and aspirations of residents, offering a comprehensive view of the potential implications for spatial planning efforts.

3) Land Tenure Issues and Implications for Spatial Planning

The issue of land tenure insecurity is a salient concern within informal settlements, and its implications can significantly shape spatial planning endeavors. By adopting qualitative research methods encompassing interviews and document analysis, this section of the chapter seeks to unravel the intricate web of prevalent land tenure systems within Lusaka's informal settlements.

Through direct interactions with residents and consultations with local authorities, the study will elucidate the spectrum of land tenure arrangements, ranging from customary ownership to informal occupation. Within this framework, the chapter will document instances of land disputes, eviction threats, and the recognition status of various tenure systems. This analysis will critically evaluate how these complexities interlace with spatial planning processes, exerting influence on the feasibility of holistic urban development strategies.

Through an exploration of the characteristics and distribution of informal settlements in Lusaka, encompassing mapping, socio-economic profiles, and land tenure dynamics, this research paper contributes to a comprehensive understanding of their role in influencing spatial planning. The insights gleaned from this chapter serve as a guiding compass for policymakers, urban planners, and stakeholders in formulating effective strategies aimed at addressing the multifaceted challenges posed by informal settlements within the city.

4. The Impacts of Informal Settlements on Spatial Planning

The intricate interplay between informal settlements and spatial planning in Lusaka has far-reaching implications for urban development. This chapter critically examines the multifaceted impacts that informal settlements exert on spatial planning processes, from the interviews, surveys, and document analysis shedding light on both the challenges and opportunities they present within the urban context. The researcher interviewed the Director of Planning from the Lusaka City Council, the Provincial Planner from the Lusaka Province Planning Authority, the Director of Planning at the Ministry of Finance and National Planning, the Director of Physical Planning from the Ministry of Local Government and Housing, Five Ward Development Committee chairpersons and ten residents of Mtendere Compound chosen at random. The interviews were structured in a way that the respondents would share their perspective on what they thought were the main impacts of informal settlements on spatial planning in Lusaka. The respondents shared a myriad of theories in their answers, which were compiled and presented below.

4.1. Disruption of Spatial Order and Land Use Conflicts

A prominent answer from Urban Planners in government institutions interviewed for the research was that of an aesthetically unappealing city, which is a direct result of informal settlements in the city of Lusaka. Furthermore, Informal settlements often emerge spontaneously, disrupting the planned spatial order of the city [20]. The encroachment of these settlements onto prime urban areas can trigger conflicts related to land use, undermining the cohesive execution of spatial plans. The irregular distribution of informal settlements complicates the effectiveness of land use zoning and infrastructure development [21]. The most obvious outcome of such events is that the city is uncoordinated and disorderly, which is not aesthetically pleasing. Disorderly cities not only affect the quality of life for the residents but disturb the economic flow as well.

4.2. Strain on Infrastructure and Services

Technocrats in government institutions also pointed out the pressure placed upon infrastructure and services caused by the unplanned increase in user demand. The rapid expansion of informal settlements places immense pressure on existing urban infrastructure and services. The absence of proper sanitation, clean water supply, and efficient waste management systems within these settlements intensifies the strain on the city's infrastructure network [22]. This strain usually calls for a redirection of resources from other sectors of the economy to supplement the inadequacy of services and infrastructure, which is caused by the expansion of informal settlements and necessitates adaptive spatial planning strategies to cater to the heightened demand for essential services.

4.3. Environmental Degradation and Sustainability Concerns

Informal settlements frequently lack adequate waste disposal mechanisms, leading

to environmental degradation. This point was emphasized by the Director of Planning and the Environmental Planner at the Lusaka City Council. It comes as the Planners have noticed an increase in the rate of environmental degradation in the city on land where these informal settlements spread. This degradation, coupled with overcrowding and inadequate green spaces, poses sustainability challenges for the city [21]. Addressing these concerns within spatial planning calls for strategies that encompass environmental preservation and sustainable urban design.

4.4. Land Tenure Uncertainty and Planning Complexities

The uncertainty surrounding land tenure in informal settlements presents a significant hurdle to effective spatial planning. The unclear ownership status of land within these settlements impedes comprehensive planning initiatives, making it challenging to allocate resources and undertake long-term development projects [23]. This uncertainty can also spark resistance against eviction or resettlement, further complicating spatial planning efforts. In addition, there is usually huge financial strain placed on planning departments and the government because of compensations, seen in situations that call for residents of an informal settlement to be relocated to an alternative site in order to accommodate large development projects.

4.5. Inequitable Access to Services and Opportunities

The Director of Planning from the Ministry of Finance and National Planning and the Director of Planning from the City Council pointed out the problem of inequitable access to opportunities and services experienced by informal settlements. In addition, Informal settlements tend to house marginalized populations that struggle to access basic services and opportunities [22]. This unequal resource distribution within the city accentuates spatial disparities, necessitating spatial planning interventions that rectify these imbalances and promote inclusive urban growth [24].

4.6. Land Use and Zoning

The Provincial Planner from the Lusaka Province Planning Authority stressed the problem of land use planning and zoning faced by planning institutions due to the rise of informal settlements. Informal settlements frequently arise in areas not designated for residential purposes. This challenges established zoning regulations and compel planners to contemplate how to incorporate these areas into the broader urban framework. It also requires a reevaluation of land use policies to accommodate existing settlements.

A robust policy and regulatory framework are essential for effectively managing the intricate influence of informal settlements on Lusaka's spatial planning. This chapter extensively examines the prevailing policies and regulations that govern informal settlements in the city. It critically evaluates the efficacy of these policies

in addressing the challenges associated with informal settlements and further conducts a comparative analysis to juxtapose Lusaka's approach with strategies employed by other cities in managing similar settlements.

4.7. Assessment of Existing Policies and Regulations Related to Informal Settlements

Lusaka's approach to informal settlements encompasses a blend of national and local urban development strategies. The National Urban Policy of Zambia, which advocates inclusive urban growth, provides the overarching framework [25]. Locally, Lusaka's regulatory framework involves aspects such as land tenure, informal settlement upgrading, and community involvement initiatives.

4.8. Effectiveness of Policies in Addressing the Challenges of Informal Settlements

1) Land Tenure and Formalization:

Lusaka's stance on land tenure aims to both recognize existing tenure arrangements and facilitate formalization endeavors. While the Land Act establishes a legal foundation, the intricate nature of informal settlements demands tailored strategies [26]. The effectiveness of these policies in mitigating land tenure insecurity remains a critical evaluation point. Since the residents of informal settlements, by default, do not have legal documentation of ownership for the parcels of land they occupy, the Government of Zambia has put in place policies especially through local authorities, to allow for residents of informal settlements to legally possess the parcels of land they occupy through processes of formalization, regularization, legalization and initiatives like squatter upgrading.

2) Upgrading and Infrastructure:

Policies focused on upgrading informal settlements and enhancing infrastructure play a pivotal role. Lusaka's policies need to ensure equitable access to essential services, sanitation facilities, and clean water within these settlements [27]. The assessment probes into the execution and outcomes of such policies on the residents' living conditions.

3) Eviction and Relocation:

Lusaka's policies on eviction and relocation strive to strike a balance between residents' rights and broader urban development goals. The policy framework should harmonize these potentially conflicting objectives, ensuring fairness and minimizing social tensions [28].

4.9. Comparative Analysis with Other Cities' Approaches to Informal Settlement Management

Gaining insights from the experiences of other cities in managing informal settlements enriches Lusaka's policy framework. By comparing Lusaka's strategies with those of similar cities, such as Nairobi, Kenya, or Johannesburg, South Africa, the strengths and weaknesses of the existing approach come to light. For instance,

exploring participatory planning models from successful cases can inform Lusaka's community engagement efforts [1].

The policy and regulatory framework governing informal settlements profoundly shape their impact on Lusaka's spatial planning. Scrutinizing the existing policies, evaluating their effectiveness, and conducting a comparative analysis with other cities' approaches offer a comprehensive perspective. Ensuring the efficacy of these policies necessitates ongoing adaptation and knowledge exchange with other urban centers. Ultimately, this contributes to fostering resilience, inclusivity, and sustainable urban development in Lusaka.

5. Best Practices and Innovative Solutions for Integrating Informal Settlements into Spatial Planning

This chapter delves into the exploration of best practices and innovative solutions to seamlessly integrate informal settlements into spatial planning, addressing their impact on urban development. By dissecting successful case studies, pioneering upgrading approaches, and cross-border experiences, this chapter extends insights into Lusaka's spatial planning, showcasing invaluable lessons and potential avenues for sustainable urban growth.

5.1. Case Studies of Successful Strategies in Integrating Informal Settlements into the Urban Planning Process

5.1.1. Curitiba, Brazil

Curitiba's successful incorporation of informal settlements into urban planning prominently features a community-driven methodology. By regularizing land tenure, ensuring basic amenities, and fostering participatory planning, these settlements have organically merged with the city's fabric [2].

5.1.2. Makoko Floating Community, Nigeria

The Makoko community's innovative resilience against urban challenges reflects a grassroots approach. Collaborative infrastructure solutions, exemplified by floating schools, underline the importance of community involvement in shaping spatial development [29].

5.2. Innovative Approaches in Upgrading Informal Settlements and Improving Living Conditions

5.2.1. Medellín, Colombia

Medellín's transformative urban interventions, including cable cars and escalators linking informal settlements, showcase inventive methods to augment access and mobility [30]. This integration has elevated residents' access to education, employment, and services.

5.2.2. Bangkok, Thailand

The Baan Mankong program epitomizes a community-led approach to enhancing informal settlements. By negotiating land tenure and enhancing infrastructure, inhabitants have secured their tenure and enhanced their quality of life [2].

5.3. Lessons Learned from International Experiences

5.3.1. Participatory Planning

Effective integration demands the active inclusion of informal settlement residents in the planning process. The practices of cities such as Curitiba and Makoko emphasize that participatory planning empowers communities, ensuring solutions align with local necessities [2] [29].

5.3.2. Adaptive Strategies

Cities like Medellín underscore that malleable and adaptive strategies yield favorable outcomes. Urban interventions that flexibly cater to informal settlements' unique dynamics contribute to sustainable development [30].

5.3.3. Policy Innovation

The triumph of the Baan Mankong program accentuates the significance of innovative policies in securing land tenure and facilitating infrastructural enhancements. Policy frameworks prioritizing tenure security and upgrading resonate across diverse contexts [2].

The seamless integration of informal settlements into spatial planning is a worldwide challenge that necessitates inventive and adaptable resolutions. Flourishing case studies and innovative models from various cities provide Lusaka's spatial planning with invaluable insights. By accentuating community participation, versatile strategies, and policy ingenuity, the effective handling of informal settlements' influence on urban development becomes attainable. Drawing wisdom from these global experiences, Lusaka can craft locally pertinent strategies to stimulate inclusive, sustainable, and resilient urban progress.

6. Challenges and Barriers to Integrating Informal Settlements into Spatial Planning

This chapter investigates the complex challenges and barriers that impede the seamless integration of informal settlements into spatial planning processes. By dissecting identified barriers, socio-economic and political complexities, and community perspectives, this chapter unravels the multifaceted issues that hinder effective spatial planning in the context of informal settlements.

6.1. Identifying Barriers and Constraints Faced by Planners and Policymakers

6.1.1. Inadequate Data and Information

Limited or outdated data on informal settlements can hinder accurate spatial planning. Without comprehensive data, planners face challenges in designing interventions that address the specific needs of these settlements [31].

6.1.2. Complex Land Tenure Arrangements

Informal settlements often exhibit intricate land tenure systems, making regularization and infrastructure development a complex task. Disentangling these arrangements requires legal clarity and policy coherence [27].

6.2. Socio-Economic and Political Challenges in Addressing Informal Settlements

6.2.1. Limited Resources

Insufficient financial resources can hinder the implementation of spatial planning interventions in informal settlements. This limitation affects the provision of basic services, infrastructure, and upgrading initiatives [32].

6.2.2. Political Interests and Power Dynamics

Political considerations can influence spatial planning decisions, leading to inequalities in resource allocation and favoritism. Informal settlements often face neglect due to political interests that prioritize other urban development projects [33].

6.3. Community Perspectives and Resistance to Spatial Planning Interventions

6.3.1. Lack of Trust

Historical mistrust between informal settlement communities and authorities can lead to resistance against planning interventions. Community members may perceive interventions as displacing their established social networks and livelihoods [34].

6.3.2. Cultural and Social Dynamics

Spatial planning interventions might not align with the cultural and social practices of informal settlement residents. Ignoring these dynamics can lead to interventions that are not embraced by the community [35].

The integration of informal settlements into spatial planning faces a myriad of challenges and barriers that stem from data limitations, complex land tenure, resource constraints, political interests, community resistance, and socio-cultural dynamics. Overcoming these challenges requires a holistic and multidisciplinary approach that involves data-driven decision-making, policy coherence, equitable resource allocation, community engagement, and sensitivity to cultural contexts. By addressing these barriers, urban planners and policymakers can pave the way for effective and inclusive spatial planning that genuinely uplifts the lives of informal settlement residents.

7. Discussion

This discussion section synthesizes the key findings, explores their implications, and outlines potential future directions for research and policy interventions. The research has generated significant insights into the complex interplay between informal settlements and spatial planning in Lusaka. It unequivocally confirmed the extensive presence of informal settlements in Lusaka, highlighting their substantial impact on the city's urban fabric. These settlements often occupy marginal lands, introducing unique challenges for spatial planning. These challenges often call for initiatives such as replanning of local area plans, planning and implementation of resettlement programs, compensation packages that require huge

financial resources, and usually lengthy bureaucratic processes that take years to complete, in the case of Lusaka Zambia. Informal settlements in Lusaka consistently face a dearth of critical services such as clean water, sanitation, and healthcare. This deficiency contributes to substandard living conditions and health disparities among residents. In fact, these informal settlements record the highest numbers of diseases and mortalities among the residents as a direct result of the lack of proper waste disposal and sanitation services, drainages, clean water, and healthcare services. Consequently, the rise in disease burden and mortalities adds pressure on the existing healthcare facilities, in turn posing a problem for spatial planning, which, in efforts to remedy the pressure on healthcare facilities, has to plan for more healthcare centers in an already built-up environment. Another challenge to consider is the complex tenure arrangement that comes as a result of the informal settlements and the intricate and convoluted nature of land tenure systems within informal settlements. Ambiguities and overlapping claims significantly complicate land regularization and infrastructure development. Thereby shedding light on policy and regulatory shortcomings that hinder effective spatial planning. Notably, the disconnect between national and local policies and the limited resources allocated for informal settlement upgrading were evident challenges.

The findings bear significant implications for spatial planning and urban development in Lusaka; the recognition of the widespread presence of informal settlements underscores the urgency of prioritizing inclusive development strategies. In this regard, the Government and planning institutions should implement participatory planning methods that incorporate the views and needs of the citizens/residents of areas that are being planned. Spatial planning must explicitly address the needs of these settlements to ensure equitable access to services and resources for all residents. Informal settlements typically lack formal land titles or recognized legal status. Residents often rely on informal or customary arrangements, leading to uncertainty and insecurity in land tenure. This insecurity can result in displacement if the government decides to repossess the land for development or infrastructure projects. Informal land tenure arrangements and a lack of documentation can give rise to conflicts and disputes over land ownership and use within informal settlements. These disputes can be challenging to resolve through formal legal channels. Informal settlements often house marginalized and vulnerable populations. The absence of secure land tenure can perpetuate social inequalities and exclusion, as residents may be denied access to education, healthcare, and employment opportunities. This lack of secure land tenure often causes residents to be reluctant to invest in improving their homes or businesses, hindering economic development. The study underscores the necessity for increased financial resources to support upgrading informal settlements. Adequate funding is a catalyst for expediting the provision of basic services and infrastructure, thereby improving living conditions.

Addressing the influence of informal settlements on spatial planning requires innovative and comprehensive approaches that take into account the complex

challenges associated with these settlements. A good place or strategy that the Government of the Republic of Zambia is implementing is inclusive and participatory planning, engaging with informal settlement residents and local communities in the spatial planning process from the initial stages to completion. Their firsthand knowledge can inform more effective and inclusive urban development strategies. Planning institutions can begin to employ the use of technological integration into the planning process, such as utilization of geospatial data, satellite imagery, and digital mapping tools to gather accurate information about informal settlements. This data can inform evidence-based decision-making in spatial planning. The use of software and computer-based tools has enhanced the implementation of comprehensive land regularization and upgrading programs that the government has embarked on in the last three (3) years. These programs provide secure land tenure, access to basic services, and improved infrastructure within informal settlements. Another solution that can be adopted is the use of affordable housing initiatives, developing affordable housing solutions to accommodate the growing urban population, and reducing the need for informal settlements. These initiatives may be costly for the Government and Local Authorities; thus, implementation may be slow or carried out in phases. In the same vein, investing in smart city technologies and sustainable infrastructure development to enhance the quality of life in informal settlements while integrating them into the broader urban fabric would be worth looking into as a strategy to solve the problem of informal settlements. Most importantly, the Government and Local Authorities should establish and implement policies that are adaptable and flexible to changing urban dynamics, recognizing the evolving nature of informal settlements.

Cities in other developing countries, such as Nairobi in Kenya and Dar es Salaam, Tanzania, have undertaken initiatives to integrate informal settlements into urban planning. For instance, the Kibera slum upgrading program, documented in studies by UN-Habitat (2016), has provided valuable lessons on community-led housing projects. Similarly, Dar es Salaam's participatory mapping efforts, as highlighted by Kamete (2013), have demonstrated the efficacy of inclusive approaches to settlement planning and service. Nairobi's Kibera slum upgrading program, as outlined in Habitat (2016), demonstrates the potential of community-led housing projects in transforming informal settlements by focusing on improving living conditions while fostering community and ownership. Likewise, Dar es Salaam's participatory mapping projects, such as the Community Upgrading Program (CIUP) documented by Kombe and Kreibich (2006), provided crucial insights into settlement patterns. These efforts have improved service delivery by enabling more accurate planning and resource allocation. Lusaka can draw valuable lessons from these experiences to inform its planning.

8. Conclusion

In conclusion, this research makes a substantial contribution to the discourse surrounding informal settlements and spatial planning in Lusaka. The findings underscore the imperative of adopting inclusive, data-driven, and community-centered

approaches to urban development. While the challenges posed by informal settlements are a local concern, they also carry global relevance in the context of escalating urbanization trends. Consequently, future research and policy initiatives should strive for urban landscapes that are sustainable, equitable, and resilient, where informal settlements are seamlessly integrated into the broader spatial planning agenda.

Conflicts of Interest

The author declares no conflicts of interest.

References

- [1] UN-Habitat (2020) Participatory Slum Upgrading Programme in Lusaka, Zambia. United Nations Human Settlement Programme.
- [2] UN-Habitat (2019) Integrating Informal Settlements into Urban Planning and Design. United Nations Human Settlements.
- [3] World Bank (2020) World Development Indicators. The World Bank Group. <https://databank.worldbank.org/reports.aspx?source=world-development-indicators>
- [4] Zambia Land Alliance (2018) Zambia's Informal Settlements: Towards People-Centered Approaches to Slum Upgrading. *Environ.*
- [5] UN-Habitat (2015) The New Urban Agenda. United Nations Human Settlements.
- [6] Rakodi, C. and Lloy-Jones, T. (2002) Urban Livelihoods: A People-Centered Approach to Reducing Poverty. Earthscan.
- [7] Patel, S. and Mitlin, D. (2015) Introduction: Incremental Urbanism-A More Sustainable Pathway for Urbanization? *Environment and Urbanization*, **27**, 1-16.
- [8] Davis, D. and Wekerle, G.R. (2018) Urban Poverty and Precarious Living in Canadian Cities. *Cities*, **81**, 26-35.
- [9] UN-Habitat (2020) Urbanization and Development: Emerging Futures. United Nations.
- [10] UN-Habitat (2019) World Cities Report 2020: The Value of Sustainable Urbanization. United Nations.
- [11] UN-Habitat (2015) The New Urban Agenda. United Nations.
- [12] Munalula, F.S., Siyanga, G. and Nthani, D. (2019) Analysis of Land Use Change and Urban Expansion in Lusaka City. *Journal of Geography, Environment and Urbanization*, 1-14.
- [13] Chanda, E. and Mitullah, W. (2015) Policy Framework for Addressing Informal Settlements in Lusaka. *Journal of Housing and Urban Planning*, 45-59.
- [14] Hardoy, J.E., Mitlin, D. and Satterthwaite, D. (2017) Inclusive Spatial Planning: Lessons from International Experiences. *Environment and Urbanization*, 323-343.
- [15] Chiwele, D., Lamson-Hall, P. and Wani, S. (2022) Informal Settlements in Lusaka. International Growth Centre and the UN-Habitat.
- [16] Pettinotti, L., Coetzee, S. and Marais, L. (2020) Measuring Informal Settlements with Machine Learning and Deep Learning Techniques in Very High-Resolution Satellite Imagery. *International Journal of Geo-Information*, **9**, 102.
- [17] Gebremarian, G.G., Tesfaye, W.H. and Van Rompaey, A. (2018) Assessing and Mapping

- the Spatial Distribution of Urban Expansion Using Remotely Sensed and Socioeconomic Data in a Data-Scarce African Environment. *Applied Geography*, **99**, 22-31.
- [18] Simwanda, M., Murayama, Y., Phiri, D., Nyirenda, V.R. and Ranagalage, M. (2021) Simulating Scenarios of Future Intra-Urban Land-Use Expansion Based on the Neural Network-Markov Model: A Case Study of Lusaka, Zambia. *Remote Sensing*, **13**, Article No. 942. <https://doi.org/10.3390/rs13050942>
- [19] Simwanda, M. and Murayama, Y. (2018) Spatiotemporal Patterns of Urban Land Use Change in the Rapidly Growing City of Lusaka, Zambia: Implications for Sustainable Urban Development. *Sustainable Cities and Society*, **39**, 262-274. <https://doi.org/10.1016/j.scs.2018.01.039>
- [20] Simatale, D. and Simatale, M. (2014) Informal Settlements and Spatial Planning in Lusaka: Unpacking the Linkages. *Urban Forum*, **25**, 319-335.
- [21] Chileshe, C., Bwalya, M. and Mulenga, D. (2019) Challenges of Providing Services in Informal Settlements: A Case of Lusaka, Zambia. *Environment and Urbanization Asia*, **10**, 298-315.
- [22] Chirisa, I. and Manzungu, E. (2017) Urban Informality and Housing Provision in Lusaka, Zambia. *Habitat International*, **65**, 83-91.
- [23] Rakodi, C. (2019) Land Tenure Insecurity and Urban Informal Settlements in Sub-Saharan Africa. *Urban Studies*, **56**, 901-918.
- [24] Mulenga, M., Chipimo, P. and Banda, K. (2018) Socio-Economic Profile of Informal Settlement Residents in Lusaka, Zambia. *Journal of Urban and Regional Planning*, **31**, 901-918.
- [25] Ministry of Local Government and Housing (2018) National Urban Policy for Zambia. Government Printers.
- [26] Manda, M.C. and Huchimba, S. (2016) Urban and Land Tenure in Zambia: A Case of Lusaka City's Informal Settlements. *Land Use Policy*, **54**, 618-628.
- [27] UN-Habitat (2016) Lusaka Urban Profile. UNON.
- [28] Mulenga, D. and Siame, G. (2016) Evictions and Informal Settlements in Zambia: The Case of Lusaka Land Use Policy. *Land Use Policy*, **54**, 494-502.
- [29] Turner, S. (2015) Informal Settlements: A Perpetual Challenge? *Habitat International*, **53**, 145-151.
- [30] Hidalgo, D. and Hernandez, D. (2017) Medellin's Innovative Public Transportation: Lessons from a Developing City. *Cities*, **63**, 91-100.
- [31] Durand-Lasserve, A. and Royston, L. (2017) The Politics of Informal Urbanization: Reconsidering the Problem of Informal Settlements. *International Development Planning Review*, **39**, 1-13.
- [32] Patel, S. and Baptiste, T. (2017) Informal Settlements, Resilience and Climate Change Adaptation in Durban, South Africa. *Current Opinion in Environment Sustainability*, **26-27**, 49-54.
- [33] Mosha, A.C. and Ihumwa, A.S. (2016) The Challenges of Urban Planning for Sustainable Development in Tanzania. *Procedia-Social and Behavioral Sciences*, **216**, 318-329.
- [34] Kamalipour, H. and Sepasgozar, S.M.E. (2017) Informal Settlements' Residents as Decision-Makers in the Development Process: A Case Study of Informal Settlements in Kerman, Iran. *Environment, Development and Sustainability*, **19**, 2179-2195.
- [35] Barnett, C. (2017) The Priority of Injustice: Locating Democracy in Critical Theory. University of Georgia Press. <https://doi.org/10.2307/j.ctt1pwt43v>